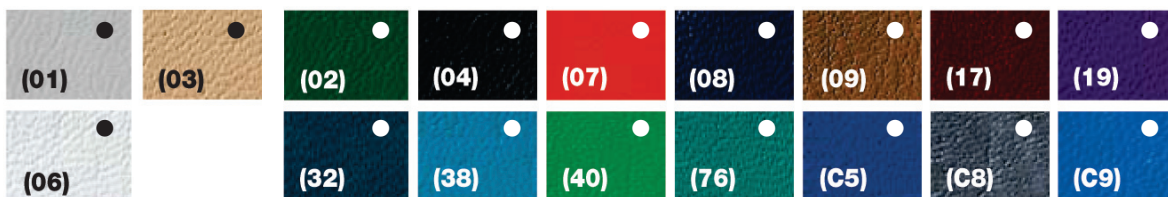




### Leatherette Vinyl

Expandable fabric with vinyl coating has an attractive, glossy texture with a leather-like grain, easy to clean.



### Nylon

70-denier fabric with waterproof polyvinyl coating is extremely lightweight, yet sturdy.



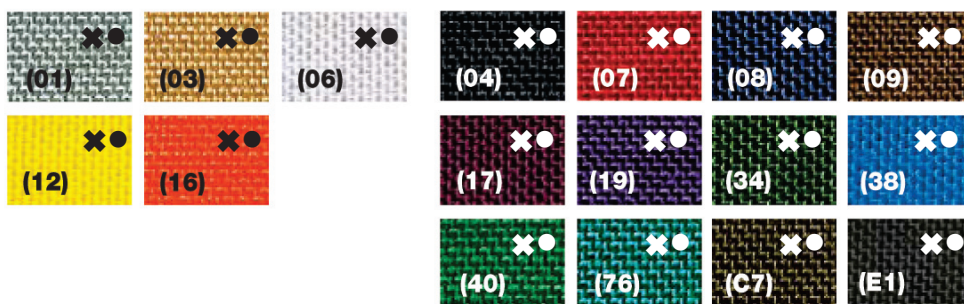
### Laminated Nylon

3-ply construction of 70-denier fabric with waterproof polyvinyl coating and cotton twill backing. Provides greater strength and is more puncture-resistant than standard nylon.



### Cordura®Plus

1000-denier fabric with waterproof polyvinyl coating is twice as durable as nylon and 14 times more durable than cotton. Handsome texture.

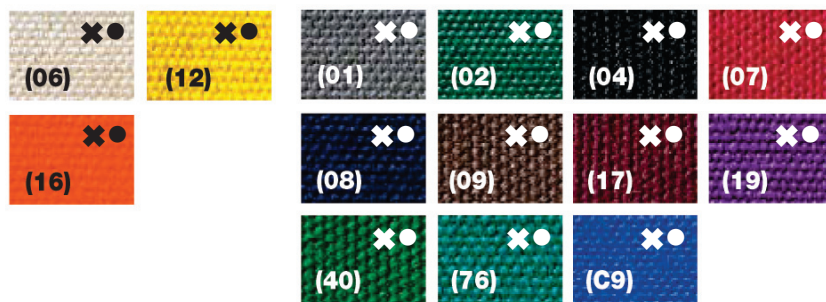


### Laminated Cordura®Plus

3-ply 1000-denier fabric with waterproof polyvinyl coating and cotton twill backing. Twice as rigid as standard Cordura®Plus. Handsome texture.

### 18 oz. Duck

Our heaviest fabric available! Rugged, two-ply cotton canvas is extremely puncture and wear-resistant. Thick weight and rigid construction are designed for rigorous applications. Water-repellent.



### 600 Denier

Durable, lined material is wear-resistant.



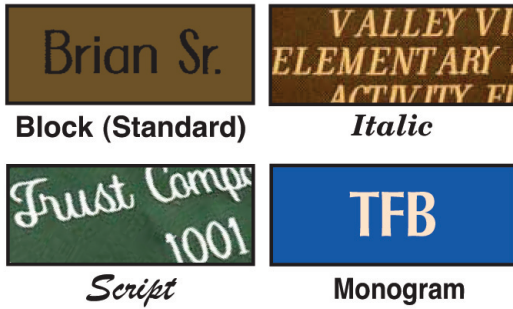
Black & White paper proof available upon request.  
Sample product proof (considered one piece of order) sent for orders of \$500 or more, or orders containing new artwork.

- ✕ = Embroidery available, see standard thread colors below
- = Imprinting available, Black ink recommended
- = Imprinting available, White ink recommended



## Embroidery Type Styles

Maximum 3 lines of copy including consecutive numbering. Letters/numerals are 1/2" high. For monogram maximum is 3 letters, upper case only.



## Standard Thread Colors

Add color code to catalog number 96-233-9007 when ordering embroidered bags. Embroidery List Price: \$1.75 per bag.



Please add fabric color code to the catalog number of your bag:

(01) Light Gray	(06) Natural or White	(12) Yellow	(17) Burgundy	(34) Forest Green	(76) Teal	(C9) Mariner Blue
(02) Hunter Green	(07) Red	(13) Neon Pink	(19) Purple	(38) Marine Blue	(C5) Wedgewood Blue	(E1) Coal Gray
(03) Tan	(08) Navy	(16) Orange or Neon Orange	(20) Clear Vinyl	(40) Kelly Green	(C7) Olive	(E2) Neon Green
(04) Black	(09) Brown	(32) Dark Blue	(45) Gold	(C8) Smoke Gray		

We cannot guarantee against variances in color, shade, texture or weave.

## Standard Ink Colors

Add PMS color to your order.



## Screened Imprint Type Styles

Helvetica (standard)  
*Helvetica Italic*  
 New Century  
*New Century Italic*  
 Bookman  
*Bookman Italic*  
 Avant Garde  
*Avant Garde Italic*  
*Brush Script*  
 Times

### Additional Charges for Imprinted Bags

Logo Retouch Charge (96-233-9001P-00) . . . . . \$55.00/hr  
 Copy Change Charge (per bag style)  
 1-4 copy changes\* (96-233-9000P-00) . . . . . \$20.00

### Color Charges

1 color/1 location imprint . . . . . FREE  
 2 colors/1 location set-up (96-233-9004-00) . . . . . \$37.00  
 plus additional per bag (96-233-9004P-00) . . . . . \$.35  
 3 colors/1 location\* set-up (96-233-9004-00) . . . . . \$37.00  
 plus additional per bag (96-233-9009P-00) . . . . . \$.55

### Identical Imprint On Second Side

1 color/2 locations (96-233-9005P-00) . . . . . additional per bag \$.25  
 2 colors/2 locations (96-233-9010P-00) . . . . . additional per bag \$.75  
 3 colors/2 locations\* (96-233-9011P-00) . . . . . additional per bag \$1.25  
 With identical imprints, colors may be mixed for quantity discount.

\*5+ copy changes or 4+color imprint - please call for a quote.

\*Clear Vinyl and Leatherette Only

# ARTWORK GUIDELINES

- Send black and white laser printout (no grayscale). Logos and other artwork should be final imprint size and of the best quality for superior results. Image should be clear and clean, with no rough/jagged edges. The quality seen on the printout is what can be expected on the product. If more than one color, please provide a black and white printout of each color separately (no grayscale). Specify the PMS color(s) used in the artwork. Suggested minimum artwork size is 4" x 5". Do not fold, staple, or tape.
- Send Electronic File
  - Mac files are preferred. PC files may be accepted, but results will vary by file.
  - Artwork created in QuarkXPress 4.1 or Illustrator 10 and lower is preferred. We cannot accept InDesign files.
  - 3.5" floppy disk, 100M Zip disk, CD-Rom, or e-mail (call Customer Service for e-mail address).

Files that will produce the best quality imprints are .eps or .ai (vector images).

All fonts should be embedded by converting text to paths, creating outlines or converting to curves. If fonts are not embedded by creating outlines, please include printer and screen font(s) when sending the art file. If saving a placed raster file (e.g.: .tif, .jpg, .psd) in Illustrator as an .eps file, all linked and/or embedded graphics must also be collected and sent with your file. Please note that saving a placed raster file as .eps does not qualify as vector art.

While we can work with some .tif, .jpg and .psd files (raster images), they can be unpredictable and results will vary by file.

These files must be sent at high resolution (600 dpi or greater) at the exact imprint size to avoid artwork retouch charges. Large files can be compressed or stuffed for e-mailing.

Multi-color artwork must have PMS spot colors assigned to colored elements of the image. Do not create the elements with CMYK or RGB colors and/or gradients.

Artwork for envelopes should not bleed; all printable materials (live matter) should be at least 1/8" inside the envelope trim size.